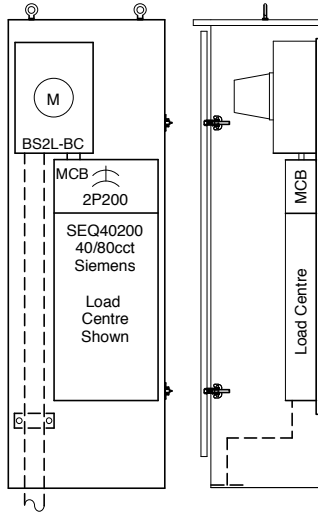




17-03

ECONOMY METERED POWER DISTRIBUTION CENTER

Model #CCP-MS



Model #CCP-MS-5 Shown

Note

- Fits up to HO #MK100 precast concrete base

- EEMAC 3R enclosure
- Specifically designed as a standalone, utility style meter socket/service entrance rated distribution center for locations such as parks etc. where economical load center style, weatherproof distribution is required and assembly is to be lockable with some space for customer relays/plugs etc.
- Code gauge metal construction - ASA 61 grey
- Full rear removable backpan - pad mount style open bottom
- Hinged door c/w two padlockable clasps and 4" lower snow kick
- Siemens #SEQ and #EQ4 type load center 10kAIC c/w MCB - service entrance rated
- Meter socket is micro #BS2L-BC for 1PH or #PL27-7JAW for 3PH (sized 20" tall) c/w 3" KO, lugged for (6) 250MCM Al/Cu and 200A rated
- Cabinet is sized to meet meter height requirements when installed on pour in place concrete pad 4" high for suggested meter cabinet height of 1.5m to 1.8m (60" - 70")
- Safety soft, machine formed corners on roof and doors
- Cross-brake style roof c/w 2" overhanging roof type driphood and two lifting eyes

| Model # | Panel Circuits | Phase | Main CB-Amps | Dimensions (") H x W x D | Bottom Space | SE Rated | Siemens CDP |
|----------|----------------|-------|--------------|-----------------------------|--------------|----------|-------------|
| CCP-MS-1 | 24/48 | 1 | 60 | 72 x 24 x 14 | 25 | yes | SEQ2460SM |
| CCP-MS-2 | 24/48 | 1 | 100 | 72 x 24 x 14 | 25 | yes | SEQ24100SM |
| CCP-MS-3 | 32/64 | 1 | 125 | 72 x 24 x 14 | 16 | yes | SEQ32125SM |
| CCP-MS-4 | 40/80 | 1 | 150 | 72 x 24 x 14 | 13 | yes | SEQ40150 |
| CCP-MS-5 | 40/80 | 1 | 200 | 72 x 24 x 14 | 13 | yes | SEQ40200 |
| CCP-MS-6 | 24 | 3 | 100 | 72 x 24 x 14 | 14 | yes | EQ424BQ100 |
| CCP-MS-7 | 42 | 3 | 200 | 72 x 24 x 14 | 6 | yes | EQ442QJ200 |